

## Emissions of Sulphur Dioxide (SO<sub>2</sub>) from Coal-Fired Power Plants in Serbia and Bosnia-Herzegovina: First Attempts of a Validation of TROPOMI Satellite Products with Airborne In Situ Measurements

Heidi Huntrieser, Theresa Klausner-Harlaß, Heinfried Aufmhoff, Robert Baumann, Alina Fiehn, Klaus-Dirk Gottschaldt, Pascal Hedelt, Ronny Lutz, Sanja Mrazovac Kurilić, Zorica Podračanin, Predrag Ilić, Nicolas Theys, Patrick Jöckel, Diego Loyola, Ismail Makroum, Mariano Mertens, Anke Roiger

**Abstract:** *The Western Balkan region is known for emitting alarmingly high sulphur dioxide amounts from coal-fired power plants. Though a number of environmental regulations have been introduced in recent years (e.g. desulphurisation installations, construction of modern power plants), the pollution burden is still much higher than recommended by the authorities. A number of different monitoring systems are required to observe the growing pollution situation in the Western Balkan region, partly caused by a high energy demand from outside (e.g. Western Europe).*

---

*Cite as:* Huntrieser H, Klausner-Harlaß T, Aufmhoff H, Baumann R, Fiehn A, Gottschaldt K-D, Hedelt P, Lutz R, Mrazovac Kurilić S, Podračanin Z, Ilić P, Theys N, Jöckel P, Loyola D, Makroum I, Mertens M, Roiger A (2023) Emissions of Sulphur Dioxide (SO<sub>2</sub>) from Coal-Fired Power Plants in Serbia and Bosnia-Herzegovina: First Attempts for a Validation of TROPOMI Satellite Products with Airborne In Situ Measurements. In: Ilić P, Govedar Z, Pržulj N (eds) Environment. Academy of Sciences and Arts of the Republic of Srpska, Banja Luka, Monograph LV:169-201

---

*Цитирање:* Хунтризер Х, Клаузнер-Харлаш Т, Ауфмхоф Х, Бауман Р, Фин А, Гетшалт К-Д, Хеделт П, Луц Р, Мразовач Курилић С, Подрашчанин З, Илић П, Тејс Н, Јекел П, Лојола Д, Макрум И, Мертенс М, Ројгер А (2023) Емисије сумпор-диоксида (SO<sub>2</sub>) из термоелектрана на угаљ у Србији и Босни и Херцеговини: први покушаји валидације резултата сателитског in situ мјерења у ваздуху помоћу TROPOMI. У: Илић П, Говедар З, Пржуљ Н (уредници) Животна средина. Академија наука и умјетности Републике Српске, Бања Лука, Монографија LV:169-201

Several of the top ten SO<sub>2</sub> polluters in Europe are located in Bosnia-Herzegovina and Serbia. Here we present the first in situ measurements of sulphur dioxide in this region conducted with a German research aircraft in cooperation with local scientists in Bosnia-Herzegovina and Serbia. Two of the strongest emitting coal-fired power plants were selected for the measurements in autumn 2020: Tuzla in Bosnia-Herzegovina and Nikola Tesla in Serbia (Nikola Tesla). The measurements were mainly conducted in the boundary layer (below ~1 km altitude in winter). Downwind of the power plants, extremely high SO<sub>2</sub> mixing ratios exceeding 100 parts per billion (ppb = nmol mol<sup>-1</sup>) were measured at a distance of ~20-40 km from the sources. The SO<sub>2</sub> plumes from the power plants were trapped in well-defined inversion layers between ~500-1000 m altitude. The airborne measurements can be used to validate synchronous spaceborne SO<sub>2</sub> measurements from the TROPospheric Monitoring Instrument (TROPOMI) onboard the Sentinel-5P satellite. A first intercomparison indicates some problems with dense smoke clouds frequently covering these countries in the winter months. However, it turned out that the Nikola Tesla flight is to some extent suited for a TROPOMI-SO<sub>2</sub> validation, since it was obtained during cloud-free conditions with a well-defined vertical extension of the probed SO<sub>2</sub> plume (needed to estimate the Vertical Column Density, VCD, measured by the satellite). In addition, these airborne measurements accompanied by model simulations can be used to determine the SO<sub>2</sub> emission strength of the power plants and to compare it to the source strength reported by the power plant operators. The results indicate a reasonable agreement between the airborne measurements, model results, emission inventories, and satellite measurements for the Nikola Tesla power plants.

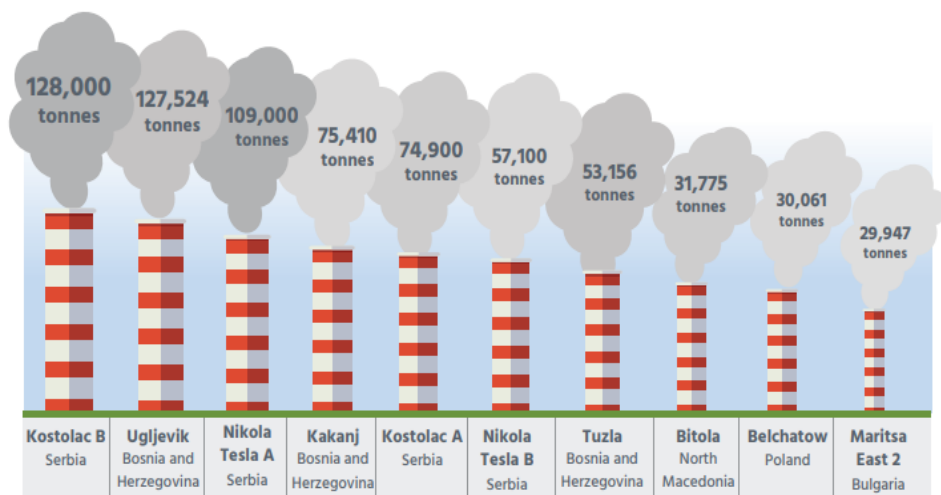
*Keywords: Sulphur dioxide emissions, coal-fired power plants, airborne measurements, satellite validation, Balkans*

## 6.1. Introduction

The Western Balkan region belongs to the most polluted regions in Europe significantly impacting the health of the population (e.g. Lammel et al 2011; Podrascanin and Mihailovic 2013; Ilić et al 2018; Mrazovac Kurilić et al 2019; Podrascanin 2019; Banja et al. 2020; Ilić et al 2020; Mrazovac Kurilić et al 2020; Ulniković et al 2020; Milošević and Mrazovac Kurilić 2021; Mimić et al. 2021; Bellis et al. 2022; Radović et al. 2022; Šikoparija et al. 2022). It is well-known that especially pollution from coal-fired power plants damages health, impacting particularly the respiratory system, causing bronchitis, asthma, a number of cardiovascular diseases and premature deaths (Lin et al. 2018; Matkovic et al. 2020).

In Europe, the Western Balkan emits alarmingly high levels of pollutants as sulphur dioxide (SO<sub>2</sub>), since a number of obsolescent and ineffective coal-fired power plants are still in use (Puljic et al. 2019). Even though the active power plants in this region account for only 6% of all European coal-fired power plants, they emit more SO<sub>2</sub> than all remaining 94% European plants (Chronic coal pollution report, 2019).

The average power plant in the Western Balkans emits 20 times more SO<sub>2</sub> and concurrently produces less energy compared to its European opponents. In the Western Balkan region, mainly the power plants in Serbia (Nikola Tesla, Kostolac) and Bosnia-Herzegovina (Ugljevik, Kakanj, Tuzla) are responsible for most SO<sub>2</sub> emissions (e.g. Jacimovski et al. 2016) (Scheme 6.1).



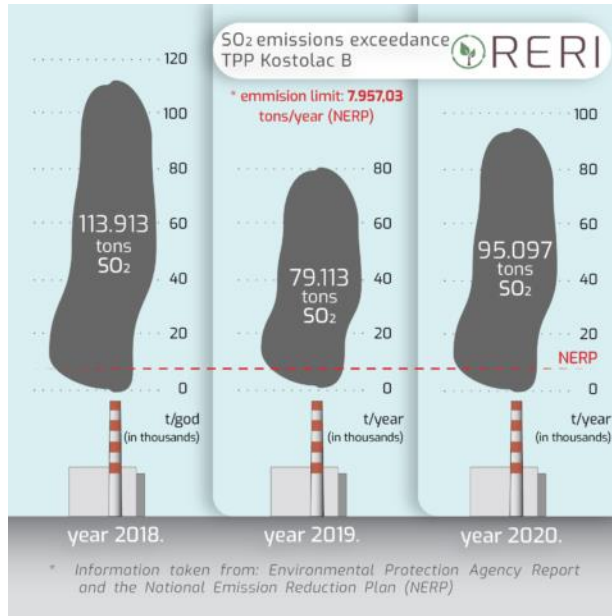
Scheme 6.1. Showing the top 10 polluting power plants in Europe by SO<sub>2</sub> emissions in 2016 (in tons SO<sub>2</sub> per year) (Chronic coal pollution 2019)

Схема 6.1. Приказ 10 електрана које највише загађују у Европи по емисијама SO<sub>2</sub> у 2016. (у тонама SO<sub>2</sub> годишње) (Chronic coal pollution 2019)

Desulphurisation installations are rare or not properly applied in this region. Though such an installation was added to Kostolac B in 2017, the SO<sub>2</sub> emissions have only slightly reduced from 114.000 tons in 2018, to 95.000 tons in 2020 (Scheme 6.2).

According to the National Emission Reduction Plan (NERP), the total SO<sub>2</sub> emissions from the twelve thermal power plants covered by NERP in Serbia are limited to

54.575 tons per year. This means that Kostolac B by itself still exceeded this number by a factor of almost two.



*Scheme 6.2. Showing the temporal evolution (2018-2020) of SO<sub>2</sub> emissions (in tons per year) from the power plant Kostolac B in Serbia ([www.eri.org.rs/en/untrue-allegations-of-zorana-mihajlovic-emissions-of-sulfur-dioxide-from-the-kostolac-b-thermal-power-plant-are-almost-12-times-higher-than-the-values-allowed-by-the-national-emission-reduction-plan/](http://www.eri.org.rs/en/untrue-allegations-of-zorana-mihajlovic-emissions-of-sulfur-dioxide-from-the-kostolac-b-thermal-power-plant-are-almost-12-times-higher-than-the-values-allowed-by-the-national-emission-reduction-plan/))*

*Схема 6.2. Приказ временске евалуције (2018-2020) емисије SO<sub>2</sub> (у тонама годишње) из термоелектране Костолац Б у Србију ([www.eri.org.rs/en/untrue-allegations-of-zorana-mihajlovic-emissions-of-sulfur-dioxide-from-the-kostolac-b-thermal-power-plant-are-almost-12-times-higher-than-the-values-allowed-by-the-national-emission-reduction-plan/](http://www.eri.org.rs/en/untrue-allegations-of-zorana-mihajlovic-emissions-of-sulfur-dioxide-from-the-kostolac-b-thermal-power-plant-are-almost-12-times-higher-than-the-values-allowed-by-the-national-emission-reduction-plan/))*

In addition, recent results from spaceborne measurements support the finding that the Balkans is a hot spot region for anthropogenic SO<sub>2</sub> emissions in Europe (Theys et al. 2015; Fioletov et al. 2017; Liu et al. 2018; Fioletov et al. 2020; Theys et al. 2021a). These emissions mainly originate from a few coal-fired power plants located in Bosnia-Herzegovina and Serbia, as mentioned before (see also Fig. 6.1). The Serbian power plants, Nikola Tesla A and B, are ranked as number 18 of the

world's strongest sources of SO<sub>2</sub> pollution according to Dahiya and Myllyvirta (2019), whereas the Bosnia-Herzegovina power plant Tuzla ranks as number 25.

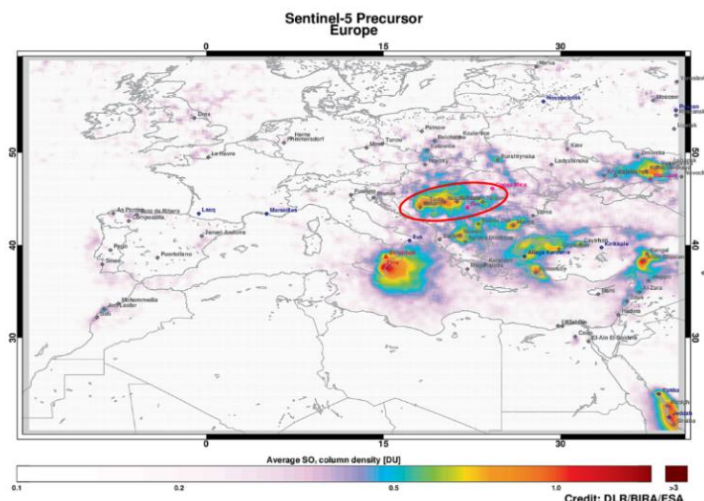


Fig. 6.1. Sulphur dioxide (SO<sub>2</sub>) measurements from the Sentinel-5P satellite obtained with the TROPospheric Monitoring Instrument (TROPOMI). Mean SO<sub>2</sub>-values in Dobson Units (DU) for Europe are shown for May 2018 – December 2019 for the operational TROPOMI product. The red circle highlights the SO<sub>2</sub> hot spot area of the Western Balkans investigated in this study (composed by emissions from the power plants Ugljevik, Kakanj, and Tuzla in Bosnia-Herzegovina plus Kostolac and Nikola Tesla in Serbia). The SO<sub>2</sub> hot spot over Sicilia and southern Italy is related to natural SO<sub>2</sub> emissions from the volcano Etna

Сл. 6.1. Мјерења сумпор-диоксида (SO<sub>2</sub>) са сателита Sentinel-5P са инструментом TROPospheric Monitoring Instrument (TROPOMI). Средње вриједности SO<sub>2</sub> у Добсоновим јединицама (Dobson Units, DU) за Европу су приказане за мај 2018 – децембар 2019 оперативни производ TROPOMI. Црвени круг наглашава жариште SO<sub>2</sub> западног Балкана које је истражено у овој студији (састављено од емисија из електрана Угљевик, Какањ и Тузла у Босни и Херцеговини, плус Костолац и Никола Тесла у Србији). Жариште SO<sub>2</sub> изнад Сицилије и јужне Италије повезана је са природним емисијама SO<sub>2</sub> из вулкана Етна

The SO<sub>2</sub> emissions from these two coal-fired power plants were targeted in 2020, within the framework of the METHANE-To-Go-Europe project, when scientists from the German Aerospace Center (DLR: Deutsches Zentrum für Luft- und Raumfahrt) started a collaboration with local scientists in Bosnia-Herzegovina and

Serbia to carry out first airborne in situ measurements of these strong SO<sub>2</sub> emitters. The team has a wide experience in measuring trace gases from natural sources (Huntrieser et al. 2016) and from air pollution (Huntrieser et al. 2004, 2005; Roiger et al. 2011a-b; 2012, 2015, 2017, 2018a-b; Klausner et al. 2018, 2020a-c; Fiehn et al. 2020a-c, 2021), as e.g. sulphur dioxide (Aufmhoff et al. 2011, 2012; Huntrieser et al. 2020, 2021a-c; Klausner et al. 2021), furthermore in performing airborne field campaigns (Roiger et al. 2011a, 2015; Huntrieser et al. 2016; Fiehn et al. 2020a; Klausner et al. 2020b; Huntrieser et al. 2021a-c) accompanied by model simulations (Jöckel et al. 2005, 2006a-b, 2008, 2010; Baumann and Schlager, 2012; Gottschaldt et al. 2013; Jöckel et al. 2016; Mertens et al. 2016; Gottschaldt et al. 2017, 2018; Mertens et al. 2018, 2020a-b, 2021).

## 6.2. Field campaign and data

The DLR-funded field experiment METHANE-To-Go-Europe, with the objective to investigate anthropogenic methane (CH<sub>4</sub>) and sulfur dioxide sources (SO<sub>2</sub>), was carried out in October and November 2020 together with local partners in the Balkans ([www.dlr.de/pa/en/desktopdefault.aspx/tabid-2342/6725\\_read-70275/](http://www.dlr.de/pa/en/desktopdefault.aspx/tabid-2342/6725_read-70275/); last visit 26 July 2022). The focus of the CH<sub>4</sub> measurements was on emissions from off-shore gas facilities in the Adriatic Sea, whereas the focus of the SO<sub>2</sub> measurements was on emissions from coal-fired power plants in the Balkans. Here we only report on results from the latter objective.

Airborne in situ measurements were carried out with the German research aircraft *Falcon-20* of the DLR (max. flight altitude ~13 km) (Fig. 6.2), which was equipped with a non-commercial Chemical Ionization Ion-Trap Mass Spectrometer (CI-ITMS) (accuracy: ~15%; detection limit ~50 ppt; temporal resolution: ~3 s) (Speidel et al. 2007; Aufmhoff et al. 2011, 2012) and a commercial gas analyzer based on pulsed fluorescence technology (Thermo Scientific 43i, less temporal resolution: 10 s, higher response time and less accuracy compared to CI-ITMS) to measure the amount of SO<sub>2</sub> in the air. Furthermore, meteorological instrumentation measuring e.g. wind speed and direction was installed (Huntrieser et al. 2016). Two flights were dedicated to power plant emissions, a flight to Bosnia-Herzegovina (Tuzla) on 2<sup>nd</sup> November and a flight to Serbia (Nikola Tesla near Belgrade) on 7<sup>th</sup> November 2020. Here we mainly report on the latter flight to Serbia and only briefly touch upon the first flight to Bosnia-Herzegovina.

To support the flight planning, a variety of SO<sub>2</sub> model forecasts (HYSPLIT, WRF-Chem and MECO(n)) were used to forecast the position of the SO<sub>2</sub> pollution plumes over the Balkan region a couple of days in advance (Baumann and Schlager

2012; Mertens et al. 2016). The source strength was derived from various inventories and reports as:

- 1) the European Pollutant Release and Transfer Register (E-PRTR) ([www.eea.europa.eu/data-and-maps/data/member-states-reporting-art-7-under-the-european-pollutant-release-and-transfer-register-e-prtr-regulation-22](http://www.eea.europa.eu/data-and-maps/data/member-states-reporting-art-7-under-the-european-pollutant-release-and-transfer-register-e-prtr-regulation-22)) and
- 2) OMI-HTAP which includes emissions from OMI-detected sources obtained from satellite measurements (Theys et al. 2015; Liu et al. 2018) and
- 3) EDGAR ([https://edgar.jrc.ec.europa.eu/emissions\\_data\\_and\\_maps](https://edgar.jrc.ec.europa.eu/emissions_data_and_maps)).



Fig. 6.2. The research aircraft Falcon-20 of the German Aerospace Center (DLR: Deutsches Zentrum für Luft-und Raumfahrt) was equipped with trace gas instrumentation to measure e.g. sulphur dioxide in-situ

*Сл. 6.2. Истраживачки авион Falcon-20 Њемачког ваздухопловног центра (DLR: Deutsches Zentrum für Luft-und Raumfahrt) био је опремљен са опремом за мјерење гаса у траговима, нпр. сумпор-диоксида in-situ*

Here only details on the HYSPLIT simulations are given due to the limited space. In the Lagrangian particle dispersion model (LPDM) HYSPLIT (Draxler et al. 1997, 1998, 1999; Stein et al. 2015) a set of continuously emitting, point-like sources in

three distinct geographical regions were simulated for the METHANE-To-Go-Europe field experiment (Fig. 6.3).

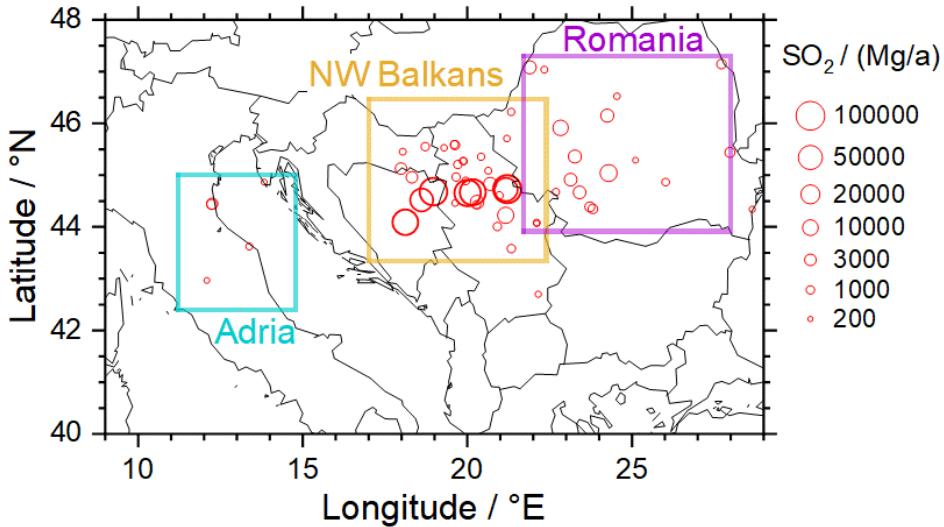


Fig. 6.3. Location and strength of all SO<sub>2</sub> point sources used in the HYSPLIT dispersion forecasts for the METHANE-To-Go-Europe field experiment

Сл. 6.3. Локација и јачина свих тачкастих извора SO<sub>2</sub> који се користе у прогнозама дисперзије HYSPLIT за теренско истраживање METHANE-To-Go-Europe

All SO<sub>2</sub>-sources were simulated in HYSPLIT as squared patches with diameters between 10 m (discrete stacks) and 15 km (some cities and large oil and gas facilities). The injection height was simulated according to the known height of the power plant stacks.

HYSPLIT was driven by meteorological data from ECMWF (European Centre for Medium-Range Weather Forecasts) (horizontal resolution of 0.1°×0.1°, hourly forecasts up to 3 days in advance possible). An example of a typical HYSPLIT-SO<sub>2</sub> forecast for the region of interest is shown in Fig. 6.4.

One of the main objectives of this study is to validate spaceborne SO<sub>2</sub>-measurements by the TROPOMI/S5P instrument with the airborne measurements focusing on SO<sub>2</sub> emissions from coal-fired power plants, which is the first study of its kind in the Balkans.

Previous validation studies were more focused on volcanic SO<sub>2</sub> (Theys et al. 2019; Hedelt et al. 2019, 2020a-b, 2021; Theys et al. 2021b), which is released at higher



altitudes where the sensitivity of the satellite measurements is higher compared to ground-emitted SO<sub>2</sub>.

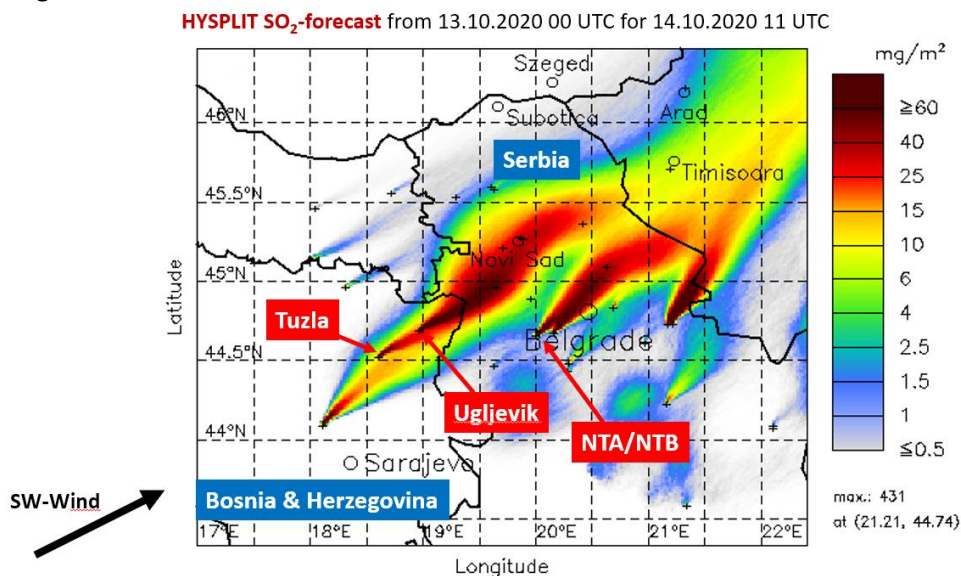


Fig. 6.4. Example of a typical HYSPLIT-SO<sub>2</sub> forecast for the region of interest indicating the direction of the SO<sub>2</sub> plumes from the coal-fired power plants depending on the prevailing wind direction (color-coded: total vertical SO<sub>2</sub> column mass per surface area in mg m<sup>-2</sup>)

Сл. 6.4. Примјер типичне HYSPLIT-SO<sub>2</sub> прогнозе за регион од интереса који указује на правац SO<sub>2</sub> облака из електрана на угља у зависности од преовлађујућег правца ветра (кодирано бојом: укупна вертикална маса стуба SO<sub>2</sub> по површини у mg m<sup>-2</sup>)

For specific studies on volcanic SO<sub>2</sub> emissions, neural network methods and inverse learning machines have been developed in the past to handle the high amount of data gained by satellite measurements (e.g. Loyola et al. 2006, 2010, 2011, 2016; Hedelt et al. 2018 a-c; Loyola et al. 2020).

TROPOMI/S5P is a novel passive imaging spectrometer which combines different methods/algorithms to retrieve SO<sub>2</sub> concentrations and cloud properties from a near-polar, sun-synchronous orbit with a daily passage around local noon time (Theys et al. 2017; Lutz et al. 2017, 2018a-b; Theys et al. 2018; Lutz et al. 2019a-b; Theys et al. 2020). In this work, we use two different sets of TROPOMI-SO<sub>2</sub> products, the official operational DOAS retrieval (Loyola et al. 2018) and the COBRA retrieval (Theys et al. 2021a), which will replace the current operational product in the future.

The variables extracted here in this study from the TROPOMI products are e.g. the Vertical Column Density (VCD) SO<sub>2</sub> (here “pollution-VCD” used), and in addition the quality assurance value (QA) and the Cloud Fraction (CF) from the TROPOMI cloud product.

Satellite measurements of SO<sub>2</sub> require cloud-free conditions, which were rarely present during the second half of the METHANE-To-Go-Europe field campaign in November 2020, when flights to the Western Balkan were realised. However, on 7<sup>th</sup> November, during the flight to the Nikola Tesla power plants in Serbia, the weather conditions were suitable for a first attempt of a TROPOMI validation with airborne SO<sub>2</sub> measurements.

The boundary layer was dominated by a strong inversion layer trapping the emissions from the power plants in a thin layer (Fig. 6.5), which is of advantage for the calculation of the vertical SO<sub>2</sub> column density (SO<sub>2</sub>-VCD) from airborne measurements, as needed for the TROPOMI-validation.

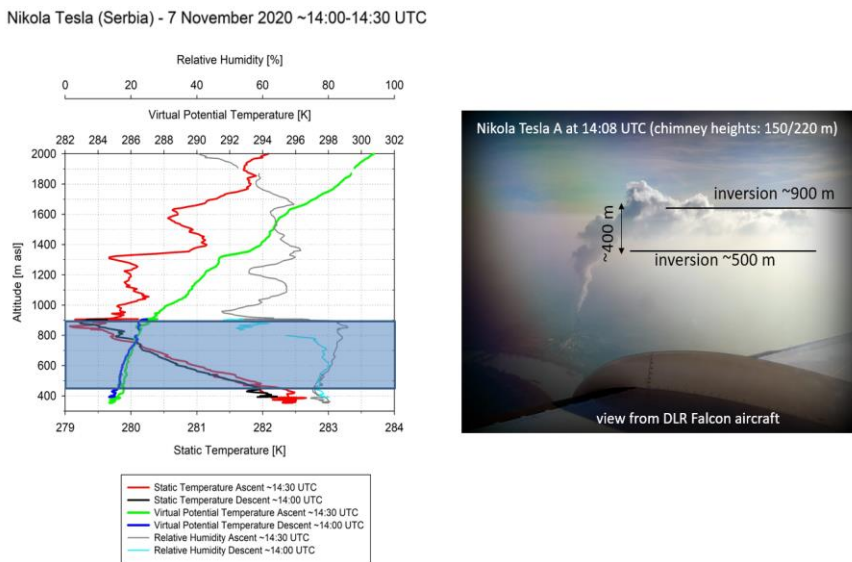


Fig. 6.5. Vertical temperature and humidity profiles from the DLR Falcon-20 flight to the Nikola Tesla A power plant on 7<sup>th</sup> November 2020 (left). The emissions from the coal-fired power plant were trapped in an inversion layer located between ~500 and ~900 m asl, as seen from Falcon (right)

Сл. 6.5. Вертикални профили температуре и влажности са лета DLR Falcon-20 до електране Никола Тесла А 7. новембра 2020 (лијево). Емисије из електране на угљ били су заробљене у инверзионом слоју који се налази између ~500 и ~900 м надморске висине, као што се види са Фалкона (десно)

### 6.3. Methods

This subsection describes the different steps and methods that were used to determine the VCD SO<sub>2</sub> from airborne measurements in detail. In summary:

- 1) Selection of reliable TROPOMI pixels according to the TROPOMI product Cloud Fraction (here  $CF \leq 0.10$  chosen) and Quality Assurance Index (here  $QA \geq 50$  chosen).
- 2) Averaging of the airborne SO<sub>2</sub> mixing ratios measured over the area of each selected TROPOMI pixels (e.g.  $P1_{SO_2}$ ). Repetition for all available vertical levels (e.g.  $P1_{SO_2@950 \text{ hPa}}$  and  $P1_{SO_2@900 \text{ hPa}}$ ).
- 3) Vertical interpolation of these averaged measurements ( $P1_{SO_2@950 \text{ hPa}}$ ,  $P1_{SO_2@900 \text{ hPa}}$  and so on) for each selected pixel (e.g. P1, P2 and so on) up to the next inversion layer. Multiplication of this interpolated vertical profile with the Averaging Kernel.
- 4) Integration over the entire vertical column (here only up to the next inversion layer) for each TROPOMI pixel area (e.g. P1 and P2 and so on) to determine the VCD.

For the validation of spaceborne with airborne measurements, first reliable TROPOMI/S5P pixels (size 3.6 x 5.6 km<sup>2</sup>) were selected which turned out to be more difficult than expected. The inspection of daily TROPOMI-SO<sub>2</sub> images showed a very noisy situation on many campaign days, especially in November. The TROPOMI measurements along the long light path at this time of the year were influenced by the low position of the sun in the winter months and the unexpected high frequency of dense smoke clouds over the Balkans. Aerosols in the smoke clouds have the capability to also absorb light in the same wavelength range as SO<sub>2</sub> and therefore might disturb the SO<sub>2</sub> signal (e.g. Bergstrom et al. 2007). Fig. 6.6. indicates how the strong TROPOMI-SO<sub>2</sub> signals from the Balkan power plants deteriorate from October to November 2019 and simultaneously the noise from unspecified SO<sub>2</sub> sources in the surroundings increases. Similar noisy observations were made for the months December/January. First in February, less disturbed TROPOMI-SO<sub>2</sub> signals are available as for the entire summer season. By using the COBRA retrieval instead of the operational TROPOMI DOAS retrieval, the noise and biases in the signal could be reduced, as also illustrated in Fig. 6.6. (comparable to Figs. 5-6 in Fioletov et al. 2020 and Fig. 4 in Theys et al. 2021a).

The mission flights to Bosnia-Herzegovina on November 2<sup>nd</sup> and to Serbia on November 7<sup>th</sup> 2020 were influenced differently by the noise in the SO<sub>2</sub> retrieval. A number of nearby local fires affected the first flight (Tuzla power plant) significantly and it was found that a reliable satellite validation is not possible due to the high density of noisy SO<sub>2</sub> signals, as indicated in Fig. 6.7. (top). In contrast, Fig. 6.7. (bottom) shows a textbook example from January 2020 (prior to the field

experiment), when an extended snow cover caused very clear and less noisy  $\text{SO}_2$  signals over Serbia (due to the constant albedo of the snow cover)

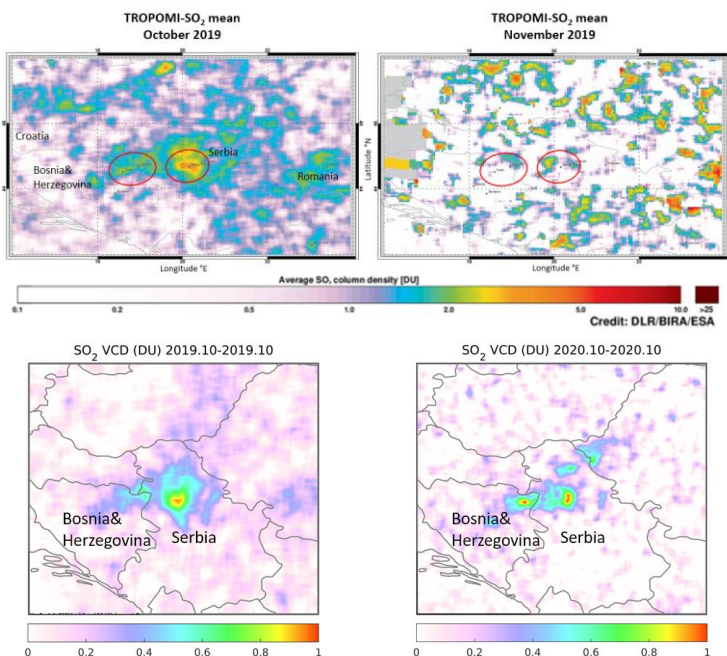


Fig. 6.6. Satellite measurements of  $\text{SO}_2$  obtained with TROPOMI. Mean  $\text{SO}_2$ -values in Dobson Units (DU) for the Balkans are shown for October (upper left) and November 2019 (upper right) for the operational TROPOMI product. The red circles highlight the two  $\text{SO}_2$  hot spot areas of the Balkans investigated in this study (containing  $\text{SO}_2$  emissions from the power plants Ugljevik, Kakanj, and Tuzla in Bosnia-Herzegovina plus Kostolac and Nikola Tesla in Serbia). A similar  $\text{SO}_2$  distribution for October 2019, as shown upper left, is found for the TROPOMI-COBRA product, however related to less noise in the signal (lower left and right)

Сл. 6.6. Сателитска мјерења  $\text{SO}_2$  добијена са TROPOMI. Средње вриједности  $\text{SO}_2$  у Добсоновим јединицама (ДУ) за Балкан приказане су за октобар (горе лијево) и новембар 2019 (горе десно) за оперативни производ TROPOMI. Црвени кругови наглашавају двије вруће тачке  $\text{SO}_2$  на Балкану које су истражене у овој студији (које садрже емисије  $\text{SO}_2$  из електрана Угљевић, Какањ и Тузла у Босни и Херцеговини, плус Костолац и Никола Тесла у Србији). Слична дистрибуција  $\text{SO}_2$  за октобар 2019, као што је приказано у горњем лијевом углу, налази се за производ TROPOMI-COBRA, али се односи на мање шума у сигналу (доље лијево и десно)

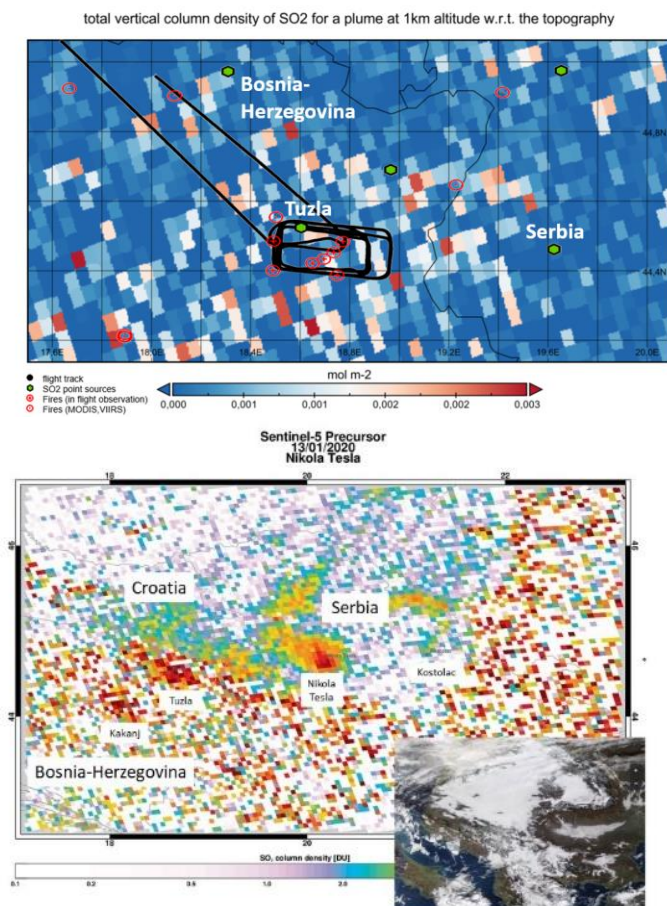


Fig. 6.7. Satellite measurements of SO<sub>2</sub> obtained with the TROPOMI-COBRA retrieval (color-coded unit in mol m<sup>-2</sup>) including the Falcon flight track (in black) from 2 November 2020 investigating the SO<sub>2</sub> emissions from the Tuzla power plant (top image). In the bottom image, SO<sub>2</sub> obtained from the operational TROPOMI retrieval (color-coded unit in DU) is shown for 13 January 2020 where an extended, triangular snow cover was present over Serbia, as indicated in the lower right satellite cloud image

Сл. 6.7. Сателитска мјерења SO<sub>2</sub> добијена TROPOMI-COBRA узорковања (бојом означена јединица у mol m<sup>-2</sup>) укључујући стазу лета Falcon (у црној боји) од 2. новембра 2020. која истражује емисије SO<sub>2</sub> из електране Тузла (горња слика). На доњој слици, SO<sub>2</sub> добијен из оперативног узорковања TROPOMI (бојом означена јединица у DU) приказан је за 13. јануар 2020. гдје је над Србијом био присутан проширени троугласти сњежни покривач, као што је приказано на доњем десном сателитском снимку облака



However, the second flight to the Nikola Tesla power plants in Serbia (November 7<sup>th</sup>, 2020) was less affected by noise in the SO<sub>2</sub> retrieval and was found to be suitable for a validation. To select reliable TROPOMI-SO<sub>2</sub> pixels from the Serbian flight, the SO<sub>2</sub> data was combined with additional TROPOMI products (i.a. QA and CF), as mentioned in Section 6.2. Reliable SO<sub>2</sub> pixels were defined when QA $\geq$ 50 and CF $\leq$ 0.10. Presently the TROPOMI/S5P pixel size is 3.6 x 5.6 km<sup>2</sup>. For the selected validation area, the airborne SO<sub>2</sub> measurements were averaged over the area of each pixel. For the calculation of the VCD from the airborne measurements, also information about the vertical SO<sub>2</sub> distribution is necessary. For 7 selected pixels, measurements were performed at three different altitudes (~400, 540 and 900 m), just below, inside and at the top of the strong inversion layer (Fig. 6.8).

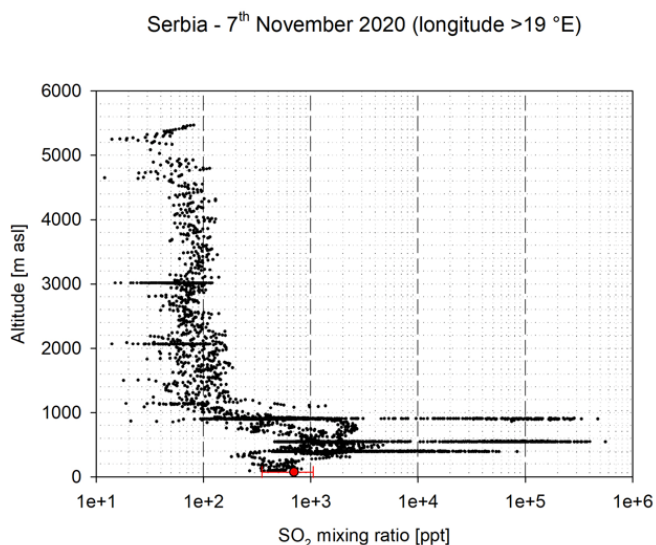


Fig. 6.8. Vertical SO<sub>2</sub> profile from the DLR Falcon-20 flight over Serbia on 7<sup>th</sup> November 2020 (black dots). Superimposed is the daily mean value and standard deviation (red dot with bar) of the ground-based SO<sub>2</sub> measurements in Obrenovac (76 m asl), located near the Nikola Tesla power plants, on 7<sup>th</sup> November 2020. The SO<sub>2</sub> mixing ratios are given in parts per trillion (ppt)

Сл. 6.8. Вертикални профил SO<sub>2</sub> са лета DLR Falcon-20 flight изнад Србије 7. новембра 2020 (црне тачке). Приказани су слојеви (layers) са вриједностима средње дневне вриједности и стандардне девијације (црвена тачка са цртицом) приземних мјерења SO<sub>2</sub> у Обреновцу (76 м.н.в.), који се налази у близини електране Никола Тесла, 7. новембра 2020. Односи мијешања SO<sub>2</sub> су дати у дијелова на трилион (ppt)

From this figure it is clear, that the main amount of SO<sub>2</sub> contributing to the VCD was located in this inversion layer between ~450 and 900 m (due to the elevated emission height from the tall chimneys ~150-300 m), which was also confirmed by HYSPLIT and MECO(n) (>90%).

Therefore, the airborne measurements were vertically interpolated between these layers and then integrated over the inversion layer to receive VCD values comparable with satellite measurements. Both the airborne measurements and the ground-based measurements from the nearby site Obrenovac and HYSPLIT indicate that the contribution to the VCD from the layer below ~400 m was less important on this day (note the logarithmic scale).

## 6.4. Results

The horizontal distribution of SO<sub>2</sub> mixing ratios along the flight path in vicinity of the Nikola Tesla A (NTA) and B (NTB) power plants is shown in Fig. 6.9. (left).

Areas with highly elevated SO<sub>2</sub> mixing ratios are highlighted in green, yellow and red colors. It is clear, that the plumes from the NTA/NTB power plants are advected with the wind to the northwest and are distinguishable from each other. Unfortunately, one of the two airborne SO<sub>2</sub> instruments (CI-ITMS) had problems to measure the unexpectedly high SO<sub>2</sub> mixing ratios inflight (as confirmed later by laboratory test). Such time sequences were replaced by measurements from the second SO<sub>2</sub> instrument onboard (Thermo Scientific 43i).

In Fig. 6.9. (right), several TROPOMI/S5P products have been added to the airborne measurements. Noticeable is the agreement of the location of the highest SO<sub>2</sub> values for the airborne and spaceborne TROPOMI measurements in the westernmost part of the flight track capturing mainly the NTB plume.

In comparison, the NTA plume is not well captured in TROPOMI-SO<sub>2</sub> signal compared to the airborne measurements. The reason is a nearby cloud remnant from the morning fog in the river valley, as indicated schematically in the figure according to the TROPOMI cloud product CF.

This result shows that only the westernmost part of the flight (including the NTB, but not NTA plume) is suitable for a validation. This part of the flight was also flown at three different vertical levels, as mentioned in Section 6.3.

Therefore, the VCD-SO<sub>2</sub> can be determined from the airborne measurements and compared to the spaceborne TROPOMI-SO<sub>2</sub> measurements as discussed in the next section.

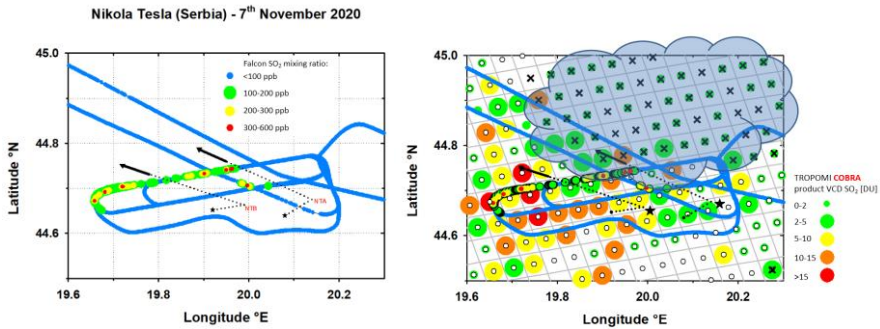


Fig. 6.9. Left: SO<sub>2</sub> mixing ratios (in ppb) along the DLR Falcon-20 flight track in vicinity of the power plants Nikola Tesla A (NTA in red) and B (NTB also in red) on 7th November 2020. The dotted lines with a star at the end indicate the measured wind direction at the height of the power plant chimneys (~150-300 m): northeasterly to easterly direction. The dotted lines with an arrow at the end indicate the wind direction measured at the Falcon flight levels downwind of the power plants (~540-900 m); predominantly from southeast. Right: Underlaid below the flight track is the corresponding TROPOMI-SO<sub>2</sub> COBRA product in DU (also color-coded). In addition, the cloud fraction (CF) is superimposed as black crosses (CF ≥ 0.20) and as white circles (CF < 0.20), and the position of a cloud remnant from the morning fog is schematically indicated

Сл. 6.9. Лијево: Односи мијешања SO<sub>2</sub> (у ppb) дуж лета DLR Falcon-20 у близини електрана Никола Тесла А (NTA црвено) и Б (NTA такође црвено) 7. новембра 2020. Испрекидане линије са звијздицом на крају показују измјерени смјер вјетра на висини димњака електране (~150-300 m): сјевероисточни ка источни. Испрекидане линије са стрелицом на крају означавају смјер вјетра мјерен на нивоима лета Фалкон низ вјетар од електрана (~540-900 m); претежно са југоистока. Десно: испод стазе за летење је одговарајући TROPOMI-SO<sub>2</sub> COBRA производ у DU (такође означен бојом). Поред тога, фракција облака (CF) је суперпонирана као црни крстови (CF ≥ 0,20) и као бијели кругови (CF < 0,20), а схематски је приказан положај остатка облака из јутарње магле

## 6.5. Discussion

The final step of this first attempt of a validation of spaceborne SO<sub>2</sub> measurements with airborne SO<sub>2</sub> measurements over the Western Balkan region also includes the intercomparison with model simulations, as introduced in Section 6.2. In Fig.



6.10. results for the flight to Serbia on November 7<sup>th</sup>, 2020, is presented for the HYSPLIT, WRF-Chem and MECO(n) models. In the westernmost part of the flight track, where reliable TROPOMI and Falcon measurements are available, the models indicate a SO<sub>2</sub> vertical column density (VCD) in the range of 2.45-11.0 DU.

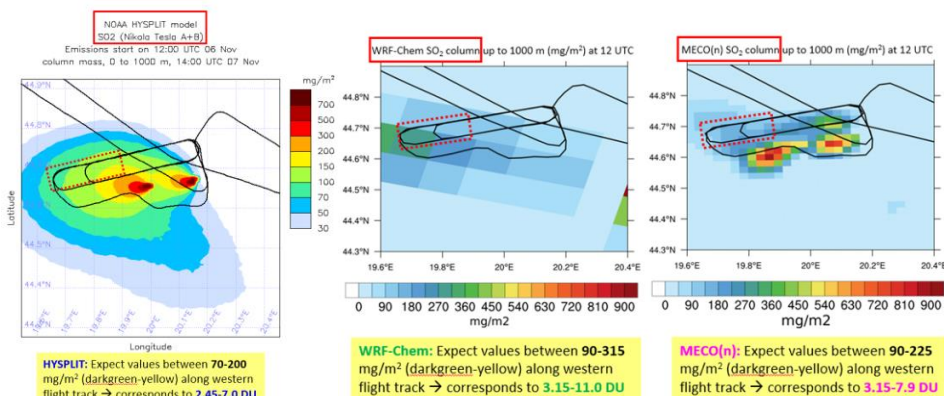


Fig. 6.10. SO<sub>2</sub> model simulations for the flight to the Nikola Tesla power plants in Serbia on November 7<sup>th</sup>, 2020, (left: HYSPLIT, center: WRF-Chem, right: MECO(n)). The red dotted box indicates the area of interest downwind of the power plants.

Сл. 6.10. Симулације модела SO<sub>2</sub> за лет до електрана Никола Тесла у Србији 7. новембра 2020. (лијево: HYSPLIT, средина: WRF-Chem, десно: MECO(n)). Црвена тачкаста кутија означава област интересовања низ вјетар од електрана.

Next the SO<sub>2</sub>-results from the Falcon vs. TROPOMI measurements and the model simulations are combined in Fig. 6.11. (top) to receive an overall picture. Both VCD-SO<sub>2</sub> values obtained from airborne (Falcon-20, y-axis) and spaceborne (TROPOMI) measurements (COBRA retrieval, x-axis) are shown on the basis of the selected 7 pixels (Fig. 6.9), indicating a clear positive correlation ( $r=0.70$ ). However, the number of data points is unfortunately rather limited, since only 7 reliable TROPOMI pixels (QA $\geq$ 50 and CF $\leq$ 0.10) with coincidental Falcon measurements at 3 vertical levels are available (needed for the calculation of representative VCDs).

In Fig. 6.11. (bottom) the SO<sub>2</sub> mean $\pm$ std values of all 7 selected data points (Falcon/TROPOMI-COBRA) in Fig. 6.11. (top) were determined in addition to the values for the TROPOMI operational product. For TROPOMI, the value for the COBRA product is slightly lower ( $\sim$ 10%) than for the operational product (due to less noise and lower biases in COBRA). In addition, the determined airborne

Falcon-SO<sub>2</sub> values are slightly lower (also ~10%) than the obtained COBRA values, though the Averaging Kernels (AK) have been applied to the airborne data set.

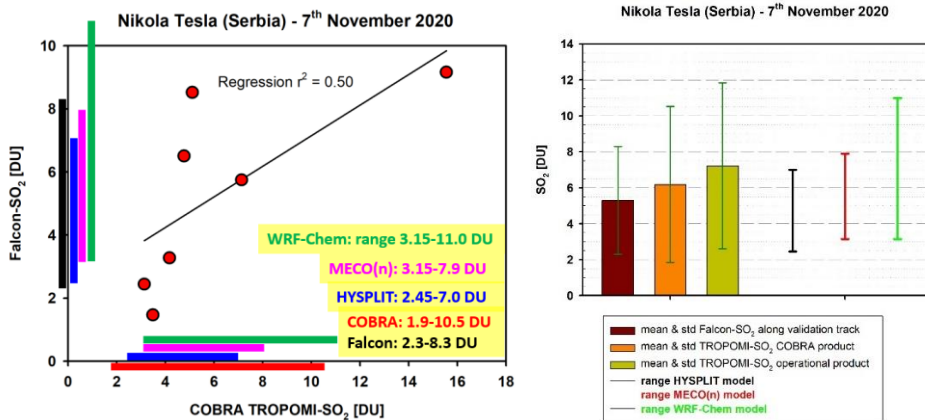


Fig. 6.11. Validation of the TROPOMI-SO<sub>2</sub> retrieval based on the COBRA algorithm with vertical column density (VCD) estimates in DU from airborne SO<sub>2</sub>-measurements obtained from the DLR Falcon-20 in vicinity of the Nikola Tesla B power plant on 7th November 2020 (top). For model simulations the ranges obtained from Fig. 6.10. are given. For the TROPOMI and Falcon-20 measurements the range of the mean values  $\pm$  standard deviation of the 7 selected TROPOMI pixels (top figure) is given in the second figure (bottom) and shown as ranges (columns) in the top figure. Averaging kernels (AK) have been applied to the Falcon-SO<sub>2</sub> data set

Сл. 6.11. Валидација узорковања TROPOMI-SO<sub>2</sub> заснованог на COBRA алгоритму са проценама густине вертикалних стубова (VCD) у DU из ваздушних мјерења SO<sub>2</sub> добијених са DLR Falcon-20 у близини електране Никола Тесла Б 7. новембра 2020. (горе). За симулације модела дати су опсеги добијени са Сл. 6.10. За TROPOMI и Falcon-20 мјерења опсег средњих вриједности  $\pm$  стандардна девијација 7 изабраних TROPOMI пиксела (горња слика) је дат на другој слици (доље) и приказан као опсеги (колоне) на горњој слици. Усредњавајућа језгра (AK) су примијењена на Falcon-SO<sub>2</sub> скупу података

To quantitatively compare satellite measurements with airborne measurements and model results, the AKs have to be calculated and applied (Theys et al. 2021a). The reason for this step is that the sensitivity of the instrument varies with height, due to the interaction of e.g. spectroscopy, optical characteristics (e.g. Rayleigh scattering), radiative transfer and spectral response with atmospheric properties. Furthermore, various interference factors attenuate the signal strength, as the

thermal and chemical composition of the atmosphere (e.g. interferences from O<sub>3</sub> absorption in the UV), aerosols and the surface albedo (Krotkov et al. 2008). The AK describes the profile sensitivity (low values = low sensitivity, e.g. for SO<sub>2</sub> at ground level) and has to be applied (=multiplied) to the airborne measurements (and model results) to mimic the altered signal that the satelliteborne instrument observes. For the relevant pressure levels (900-950 hPa = 500-900 m), where the inversion layer with the elevated SO<sub>2</sub> mixing ratios was located (Fig. 6.5), the AK values of the most relevant TROPOMI pixels (certainly not influenced by clouds: pixel number 4-8), vary between 1.0-1.3 (Fig. 6.12).

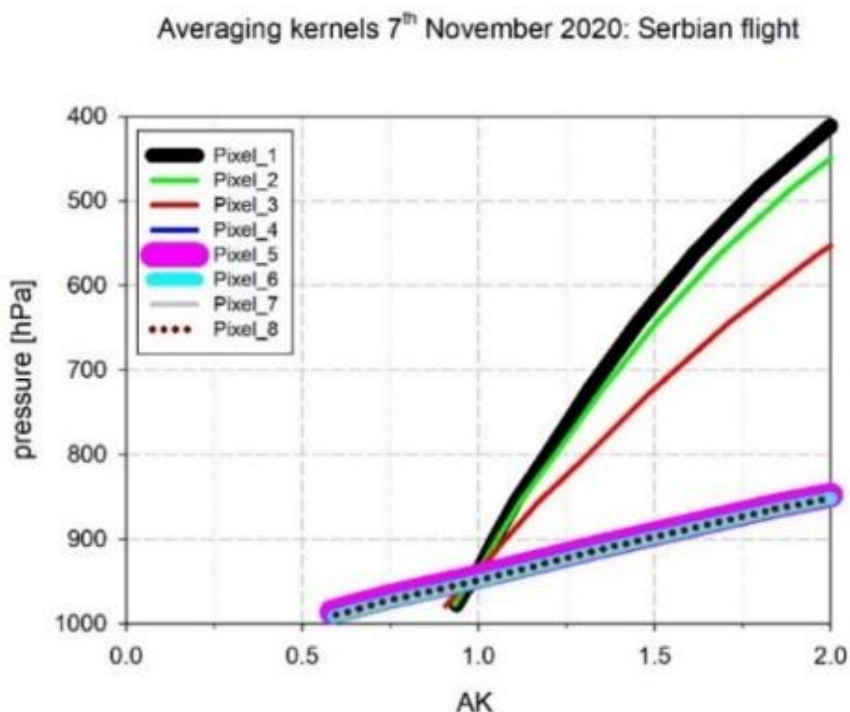


Fig. 6.12. For eight selected TROPOMI pixels from the Falcon flight to Serbia on November 7<sup>th</sup>, 2020, the vertical distribution (with pressure) of the Averaging Kernels (AK) is shown.

Сл. 6.12. За осам одабраних TROPOMI пиксела са лета Falcon за Србију 7. новембра 2020. приказана је вертикална дистрибуција (са притиском) просјечних језгара (AK).

By applying (=multiplying) these AK values to the airborne Falcon-SO<sub>2</sub> measurements, SO<sub>2</sub>-VCDs in a similar range as obtained from satellite measurements were achieved (on average only 10% difference to COBRA, Fig.

6.11). No striking differences between model results – airborne measurements – satellite measurements were observed meaning that the first validation attempt looks promising (used source strength of NTB 83.500 tons SO<sub>2</sub>/yr in the models seems to agree with measurements). The presented data set is though very sparse due to the lack of more reliable TROPOMI pixels. This would require measurements in a different season when noisy TROPOMI signals are less pronounced (not winter) and when an extended area, where the power plants are located, is cloudfree to allow for a more detailed probing.

## **6.6. Conclusion and outlook**

Our measurements during the METHANE-To-Go-Europe field experiment are:

- the first airborne in situ measurements of SO<sub>2</sub> plumes from coal-fired power plants in Serbia and Bosnia-Herzegovina,
- and the first attempt to conduct a satellite validation (here TROPOMI-SO<sub>2</sub> instrument on Sentinel-5 Precursor) with airborne SO<sub>2</sub> measurements for the power plants in this region to verify the quality of satellite measurements monitoring the pollution situation in the Western Balkans.

We found that:

- a satellite validation is difficult in winter due to the low sun position and the frequent, widespread occurrence of smoke clouds causing noise in the TROPOMI-SO<sub>2</sub> signal (less pronounced in the COBRA retrieval compared to the operational retrieval and less on days with extended snow cover),
- however, a satellite validation with airborne in situ measurements is partly simplified due to the presence of pronounced inversion layers, facilitating the perception of the vertical extension of emitted SO<sub>2</sub> power plant plumes, an essential parameter needed to estimate the Vertical Column Density (VCD) of SO<sub>2</sub> from airborne measurements for the validation with TROPOMI measurements,
- for the Falcon flight to Serbia on 7<sup>th</sup> November 2020, a coarse validation of the SO<sub>2</sub> plume from the Nikola Tesla B power plant was feasible, despite the availability of only few TROPOMI data points associated to a number of uncertainties, and despite the time difference of 2-3 h between the satellite overpass and the airborne measurements,
- for the Falcon flight to Bosnia-Herzegovina on 2<sup>nd</sup> November 2020, a validation of the SO<sub>2</sub> plume from the Tuzla power plant was not feasible, because of the presence of too noisy TROPOMI-SO<sub>2</sub> signals (caused by smoke clouds from coal heating and other local fire activities).

We learned that:

- in the Western Balkan region satellite instruments measuring SO<sub>2</sub> from space (here TROPOMI investigated) have considerable difficulties to capture the pollution situation in the winter season compared to the summer season,
- satellite measurements require cloudfree meteorological sceneries, which are rare in winter and frequently disrupted by man-made smoke clouds,
- satellite validation with airborne measurements is generally a huge challenge in the Western Balkan region: during the METHANE-To-Go-Europe field campaign described here the conditions were in addition hampered by the COVID-19 pandemic, since no stop-overs for the aircraft were possible in this region and the duration of the airborne measurements in the region was very short compared to the total flight time, which prohibited a more complete validation with satellite measurements,
- flight permission to conduct flights with a German research aircraft at very low altitude in vicinity of power plants is very difficult to receive in Western Balkan countries: in Serbia the METHANE-To-Go-Europe team finally succeeded through the support by local scientists; in Bosnia-Herzegovina the flight near the Tuzla power plant was performed as several so-called “missed approaches” to the Tuzla airport,
- flight planning was complicated by the unreliability of the meteorological wind forecasts between flight plan submission (1-2 days in advance of the flight) and the performance of the flights: HYSPLIT-SO<sub>2</sub> forecasts helpful,
- finally, the foreseen airborne instrument for SO<sub>2</sub> (CI-ITMS) was not capable of measuring the extremely high SO<sub>2</sub> mixing ratios (up to several hundred ppb = nmol mol<sup>-1</sup>) observed ~20-40 km downwind of the investigated power plants, fortunately measurements from a less precise SO<sub>2</sub> backup instrument onboard were available.

Outlook:

- More airborne SO<sub>2</sub> measurements of this kind are needed in the Western Balkan region to improve satellite algorithms for SO<sub>2</sub>,
- a new measurement technique for airborne probing of point sources (as power plants) has been set up by the METHANE-To-Go-Europe team and successfully tested in 2022 in vicinity of coal mines in Poland, consisting of a helicopter sonde (HELiPOD) flown in a wire below a helicopter (local helicopter companies can be hired, which simplifies the flight permission process considerable, furthermore flights closer to the targets are possible compared to aircraft). Next measurements on sulphur dioxide and methane emissions from oil and gas activities are planned in Oman.

## Literature

- Aufmhoff H, Hanke M, Uecker J, Schlager H, Arnold F (2011) An ion trap CIMS instrument for combined measurements of atmospheric OH and H<sub>2</sub>SO<sub>4</sub>: First test measurements above and inside the planetary boundary layer. *Int. J. Mass Spectrom.* 308(1):26–34. doi:10.1016/j.ijms.2011.07.016
- Aufmhoff H, Schäuble D, Roiger A, Arnold F, Jurkat T, Voigt C, Schlager H (2012) Chemical ionization mass spectrometric measurements of atmospheric trace gases. In: *Atmospheric Physics: Background - Methods - Trends Research Topics in Aerospace*. Springer-Verlag Berlin Heidelberg. Seiten 277–296. doi:10.1007/978-3-642-30183-4\_17
- Banja M, Đukanović G, Belis C (2020) Status of air pollutants and greenhouse gases in the Western Balkans, EUR 30113 EN, Publications Office of the European Union, Luxembourg, JRC118679. doi:10.2760/557210
- Baumann R, Schlager H (2012) Lagrangian modeling of transport and dispersion of air constituents. In: *Atmospheric Physics: Background - Methods - Trends Research Topics in Aerospace*. Springer-Verlag Berlin Heidelberg. Seiten 381–399. doi:10.1007/978-3-642-30183-4\_23
- Belis C, Djatkov D, Lettieri T, Jones A, Wojda P, Banja M, Muntean M, Paunovic M, Niegowska MZ, Marinov D, Poznanović G, Pozzoli L, Dobricic S, Zdruli P, Vandyck T (2020) Status of environment and climate in the Western Balkans, EUR 31077 EN, Publications Office of the European Union, Luxembourg. JRC129172. doi:10.2760/374068
- Bergstrom RW, Pilewskie P, Russell PB, Redemann J, Bond TC, Quinn PK, Sierau B (2007). Spectral absorption properties of atmospheric aerosols. *Atmos. Chem. Phys.* 7(23):5937–5943. doi:10.5194/acp-7-5937-2007
- Chronic coal pollution report (2019) – EU action on the Western Balkans will improve health and economies across Europe. HEAL, CAN Europe, Sandbag, CEE Bankwatch Network and Europe Beyond Coal, Available at: [www.env-health.org/wp-content/uploads/2019/02/Chronic-Coal-Pollution-report.pdf](http://www.env-health.org/wp-content/uploads/2019/02/Chronic-Coal-Pollution-report.pdf), Accessed: July 26, 2022
- Dahiya S, Myllyvirta L (2019) Global SO<sub>2</sub> emission hotspot database: Ranking the world's worst sources of SO<sub>2</sub> pollution, Greenpeace Environment Trust, Available at: [www.greenpeace.org/static/planet4-india-stateless/2019/08/204126d3-global-hotspot-and-emission-sources-for-so2\\_19th\\_august-2019.pdf](http://www.greenpeace.org/static/planet4-india-stateless/2019/08/204126d3-global-hotspot-and-emission-sources-for-so2_19th_august-2019.pdf), Accessed: July 26, 2022
- Draxler RR (1999) HYSPLIT4 user's guide. NOAA Tech. Memo. ERL ARL-230, NOAA Air Resources Laboratory, Silver Spring, MD. Available at: [www.arl.noaa.gov/wp\\_arl/wp-content/uploads/documents/reports/arl-230.pdf](http://www.arl.noaa.gov/wp_arl/wp-content/uploads/documents/reports/arl-230.pdf), Accessed: July 26, 2022
- Draxler RR, Hess GD (1997) Description of the HYSPLIT\_4 modeling system. NOAA Tech. Memo. ERL ARL-224, NOAA Air Resources Laboratory, Silver Spring, MD,

- 24 pp. Available at: <https://repository.library.noaa.gov/view/noaa/31133>,  
Accessed: July 26, 2022
- Draxler RR, Hess GD (1998) An overview of the HYSPLIT\_4 modeling system of trajectories, dispersion, and deposition. *Aust. Meteor. Mag.* 47, 295–308. Available at: <https://www.arl.noaa.gov/documents/reports/MetMag.pdf>, Accessed: July 26, 2022
- Fiehn A, Kostinek J, Eckl M, Galkowski M, Chen J, Gerbig C, Röckmann T, Maazallahi H, Schmidt M, Korbeń P, Necki J, Wildmann N, Mallaun C, Klausner T, Bun R, Fix A, Roiger A (2020c) Emissions of CH<sub>4</sub>, CO<sub>2</sub>, C<sub>2</sub>H<sub>6</sub>, CO and isotopic signatures in the Upper Silesian Coal Basin, Poland. *EGU General Assembly 2020*, 4–8. Mai 2020. doi:10.5194/egusphere-egu2020-19119
- Fiehn A, Kostinek J, Eckl M, Galkowski M, Gerbig C, Röckmann T, Menoud M, Maazallahi H, Schmidt M, Korbeń P, Neçki J, Stanisavljevic M, Swolkien J, Nickl A, Winterstein F, Mertens M, Jöckel P, Fix A, Roiger A (2021) Isotopic characterization of coal mine methane in the Upper Silesian Coal Basin, Poland. *EGU General Assembly 2021*, 19-30 April 2021. doi:10.5194/egusphere-egu21-6056
- Fiehn A, Kostinek J, Eckl M, Klausner T, Gałkowski M, Chen J, Gerbig C, Röckmann T, Maazallahi H, Schmidt M, Korbeń P, Neçki J, Jagoda P, Wildmann N, Mallaun C, Bun R, Nickl AL, Jöckel P, Fix A, Roiger A (2020a) Estimating CH<sub>4</sub>, CO<sub>2</sub> and CO emissions from coal mining and industrial activities in the Upper Silesian Coal Basin using an aircraft-based mass balance approach, *Atmos. Chem. Phys.* 20:12675–12695 doi:10.5194/acp-20-12675-2020.
- Fiehn A, Kostinek J, Eckl M, Klausner T, Gałkowski M, Chen J, Gerbig C, Röckmann T, Maazallahi H, Schmidt M, Korbeń P, Neçki J, Jagoda P, Wildmann N, Mallaun C, Bun R, Nickl AL, Jöckel P, Fix A, Roiger A (2020b) Data supplement to: Fiehn et al. (2020): Estimating CH<sub>4</sub>, CO<sub>2</sub>, and CO emissions from coal mining and industrial activities in the Upper Silesian Coal Basin using an aircraft-based mass balance approach (Version 1.00), ICOS Carbon Portal, doi:10.18160/OSFH-JJ93
- Fioletov V, McLinden CA, Griffin D, Theys N, Loyola DG, Hedelt P, Krotkov NA, Li C (2020) Anthropogenic and volcanic point source SO<sub>2</sub> emissions derived from TROPOMI on board Sentinel-5 Precursor: first results. *Atmos. Chem. Phys.* 20(9):5591–5607. doi:10.5194/acp-20-5591-2020
- Fioletov V, McLinden CA, Kharol SK, Krotkov NA, Li C, Joiner J, Moran MD, Vet R, Visschedijk AJH, Denier van der Gon HAC (2017) Multi-source SO<sub>2</sub> emission retrievals and consistency of satellite and surface measurements with reported emissions. *Atmos. Chem. Phys.* 17(20):12597–12616. doi:10.5194/acp-17-12597-2017
- Gottschaldt K, Voigt C, Jöckel P, Righi M, Deckert R, Dietmüller S (2013) Global sensitivity of aviation NO<sub>x</sub> effects to the HNO<sub>3</sub>-forming channel of the HO<sub>2</sub> + NO reaction. *Atmos. Chem. Phys.* 13(6):3003–3025, doi:10.5194/acp-13-3003-2013.

- Gottschaldt KD, Schlager H, Baumann R, Bozem H, Eyring V, Hoor P, Jöckel P, Jurkat T, Voigt C, Zahn A, Ziereis H (2017) Trace gas composition in the Asian summer monsoon anticyclone: a case study based on aircraft observations and model simulations. *Atmos. Chem. Phys.* 17(9):6091–6111, doi:10.5194/acp-17-6091-2017
- Gottschaldt KD, Schlager H, Baumann R, Cai DS, Eyring V, Graf P, Grewe V, Jöckel P, Jurkat-Witschas T, Voigt C, Zahn A, Ziereis H (2018) Dynamics and composition of the Asian summer monsoon anticyclone. *Atmos. Chem. Phys.* 18(8):5655–5675, doi:10.5194/acp-18-5655-2018
- Hedelt P, Efremenko D, Loyola D (2018a) Applying inverse learning machines to TROPOMI SO<sub>2</sub> data: first results of SO<sub>2</sub> plume height retrieval. EGU 2018, 04–13. Apr. 2018, Vienna, Austria. p.14672. Available at: <https://meetingorganizer.copernicus.org/EGU2018/EGU2018-14672.pdf>, Accessed: July 26, 2022
- Hedelt P, Efremenko D, Loyola D (2018b) SO<sub>2</sub> plume height retrieval: Applying inverse learning machines to S5p / TROPOMI SO<sub>2</sub> data. EUMETSAT Meteorological Satellite Conference 2018, 17–21. Sep. 2018, Tallinn, Estonia. Available at: <https://elib.dlr.de/121190/>, Accessed: July 26, 2022
- Hedelt P, Efremenko DS, Loyola DG, Spurr R, Clarisse L (2019) Sulfur dioxide layer height retrieval from Sentinel-5 Precursor/TROPOMI using FP\_ILM, *Atmos. Meas. Tech.* 12(10):5503–5517. doi:10.5194/amt-12-5503-2019
- Hedelt P, Koukouli M, Taylor I, Balis D, Grainger D, Efremenko D, Loyola D (2020a) Extremely fast retrieval of volcanic SO<sub>2</sub> layer heights from UV satellite data using inverse learning machines. EGU2020, 04–08. Mai 2020, Vienna, Austria. doi:10.5194/egusphere-egu2020-6991
- Hedelt P, Koukouli M, Taylor I, Balis D, Grainger D, Efremenko D, Loyola D (2021) Extremely fast retrieval of volcanic SO<sub>2</sub> layer heights from UV satellite data using inverse learning machines. EGU2021, 19–30. April 2021. doi:10.5194/egusphere-egu2020-6991
- Hedelt P, Koukouli M, Taylor I, Balis D, Grainger D, Inness A, Efremenko D, Loyola D, Azoulay A (2020b) Extremely Fast Retrieval of Volcanic SO<sub>2</sub> Layer Heights from UV Satellite Data Using Inverse Learning Machines. AGU 2020, 1-17.12.2020, San Francisco, USA. doi:10.5194/egusphere-egu2020-6991
- Hedelt P, Theys N, De Smedt I, Yu H, Lerot C, Vlietinck J, Pedernana M, Arellano S, Li C, Krotkov N, Veefkind P, Loyola D, Van Roozendaal M (2018c) First year of Sulfur Dioxide Retrievals from Sentinel-5 Precursor TROPOMI instrument and comparison with independent satellites and ground-based datasets. In: AGU Fall Meeting 2018, 10–14. Dez. 2018, Washington, D.C. USA. Available at: <https://agu.confex.com/agu/fm18/meetingapp.cgi/Paper/377945>, Accessed: July 26, 2022
- Huntrieser H, Heland J, Schlager H, Forster C, Stohl A, Aufmhoff H, Arnold F, Scheel HE, Campana M, Gilge S, Eixmann R, Cooper O (2005). Intercontinental air pollution transport from North America to Europe: Experimental evidence



- from airborne measurements and surface observations. *J. Geophys. Res.* 110:D01305, doi:10.1029/2004JD005045
- Huntrieser H, Klausner T, Aufmhoff H, Baumann R, Fiehn A, Gottschaldt KD, Hedelt P, Lutz R, Mrazovac-Kurilić S, Podraččanin Z, Ilić P, Theys N, Jöckel P, Loyola D, Makroum I, Mertens M, Roiger A (2021a) Satellite validation of TROPOMI-SO<sub>2</sub> over the Balkan region by airborne SO<sub>2</sub> measurements of coal-fired power plants, The first international conference on sustainable environment and technologies, 24–25 September 2021, University „Union Nikola Tesla”, Belgrad, Serbia. Book of Proceedings, pp 79–88. Available at: [https://elib.dlr.de/146017/1/Huntrieser\\_full%20manuscript\\_Belgrade.pdf](https://elib.dlr.de/146017/1/Huntrieser_full%20manuscript_Belgrade.pdf), Accessed: July 26, 2022
- Huntrieser H, Klausner T, Aufmhoff H, Baumann R, Fiehn A, Gottschaldt KD, Hedelt P, Lutz R, Mrazovac-Kurilić S, Podraččanin Z, Ilić P, Theys N, Jöckel P, Loyola D, Makroum I, Mertens M, Roiger A (2021b) Satellite validation of TROPOMI-SO<sub>2</sub> over the Balkan region by airborne SO<sub>2</sub> measurements of coal-fired power plants, CCVS Project Workshop, 13–15 October 2021, Available at: [www.ccvs.eu/events/ccvs-workshop-2021](http://www.ccvs.eu/events/ccvs-workshop-2021), Accessed: July 26, 2022
- Huntrieser H, Klausner T, Aufmhoff H, Baumann R, Fiehn A, Gottschaldt KD, Hedelt P, Lutz R, Mrazovac-Kurilić S, Podraččanin Z, Ilić P, Theys N, Jöckel P, Loyola D, Makroum I, Mertens M, Roiger A (2021c) Satellite validation of TROPOMI-SO<sub>2</sub> over the Balkan region by airborne SO<sub>2</sub> measurements of coal-fired power plants, ESA workshop ATMOS-2021. 22–26 November 2021, Available at: <https://atmos2021.esa.int/>, Accessed: July 26, 2022
- Huntrieser H, Lichtenstern M, Scheibe M, Aufmhoff H, Schlager H, Pucik T, Minikin A, Weinzierl B, Heimerl K, Pollack IB, Peischl J, Ryerson TB, Weinheimer AJ, Honomichl S, Ridley BA, Biggerstaff MI, Betten DP, Hair JW, Butler CF, Schwartz MJ, Barth MC (2016) Injection of lightning-produced NO<sub>x</sub>, water vapor, wildfire emissions, and stratospheric air to the UT/LS as observed from DC3 measurements. *J. Geophys. Res. Atmos.* 121(11):6638–6668, doi:10.1002/2015JD024273
- Huntrieser H, Roiger A, Sauer D, Schlager H, Mertens M, Schwietzke S (2020) Emissions from natural gas and oil operations: The airborne METHANE-To-Go field campaign in the Persian/Arabian Gulf region, Geophysical Research Abstracts, Vol. 22, EGU2020-13490, EGU General Assembly, Vienna, Austria, 4–8 May, 2020. doi:10.5194/egusphere-egu2020-13490
- Huntrieser H, Schlager H (2004) Air Pollution Export from and Import to Europe: Experimental Evidence, In: *The Handbook of Environmental Chemistry, Vol. 4 Air Pollution: Intercontinental Transport of Air Pollution* (Ed. A. Stohl), Springer Verlag, pp 69–98. doi:10.1007/b94524
- Ilić P, Nešković Markić D, Stojanović Bjelić LJ (2018e) Variation concentration of sulfur dioxide and correlation with meteorological parameters. *Arch. Tech. Sci.* 18(1):81–88. doi:10.7251/afts.2018.1018.0811

- Ilić P, Popović Z, Nešković Markić D (2020b) Assessment of meteorological effects and ozone variation in urban area. *Ecol. Chem. Eng. S.* 27(3):373–385. doi:10.2478/eces-2020-0024
- Jacimovski S, Miladinovic S, Radovanovic R (2016) Analysis of the emission of SO<sub>2</sub>, NO<sub>x</sub> and suspended particles from the thermal power plants Kostolac (Serbia). *Hum. ecol. risk assess.* 22(5):1208–1223, doi:10.1080/10807039.2016.1151347
- Jöckel P (2006a) Technical note: Recursive rediscratisation of geoscientific data in the Modular Earth Submodel System (MESSy). *Atmos. Chem. Phys.* 6:3557–3562, doi:10.5194/acp-6-3557-2006
- Jöckel P, Kerkweg A, Buchholz-Dietsch J, Tost H, Sander R, Pozzer A (2008) Technical Note: Coupling of chemical processes with the Modular Earth Submodel System (MESSy) submodel TRACER, *Atmos. Chem. Phys.* 8(6):1677–1687, doi:10.5194/acp-8-1677-2008
- Jöckel P, Kerkweg A, Pozzer A, Sander R, Tost H, Riede H, Baumgaertner A, Gromov S, Kern B (2010) Development cycle 2 of the Modular Earth Submodel System (MESSy2), *Geosci. Model Dev.* 3(2):717–752, doi:10.5194/gmd-3-717-2010
- Jöckel P, Sander R, Kerkweg A, Tost H, Lelieveld, J (2005) Technical Note: The Modular Earth Submodel System (MESSy) – a new approach towards Earth System Modeling. *Atmos. Chem. Phys.* 5:433–444. doi:10.5194/acp-5-433-2005
- Jöckel P, Tost H, Pozzer A, Brühl C, Buchholz J, Ganzeveld L, Hoor P, Kerkweg A, Lawrence MG, Sander R, Steil B, Stiller G, Tanarhte M, Taraborrelli D, van Aardenne J, Lelieveld J (2006b) The atmospheric chemistry general circulation model ECHAM5/MESSy1: consistent simulation of ozone from the surface to the mesosphere, *Atmos. Chem. Phys.* 6(12):5067–5104. doi:10.5194/acp-6-5067-2006
- Jöckel P, Tost H, Pozzer A, Kunze M, Kirner O, Brenninkmeijer CAM, Brinkop S, Cai DS, Dyroff C, Eckstein J, Frank F, Garny H, Gottschaldt KD, Graf P, Grewe V, Kerkweg A, Kern B, Matthes S, Mertens M, Meul S, Neumaier M, Nützel M, Oberländer-Hayn S, Ruhnke R, Runde T, Sander R, Scharffe D, Zahn A (2016) Earth System Chemistry integrated Modelling (ESCiMo) with the Modular Earth Submodel System (MESSy) version 2.51. *Geosci. Model Dev.* 9(3):1153–1200. doi:10.5194/gmd-9-1153-2016
- Klausner T (2020c) Aircraft-based in situ measurements of CH<sub>4</sub> and CO<sub>2</sub> downstream of European and Asian urban centres at local to synoptic scales. DLR-Forschungsbericht. DLR-FB-2020-30. Dissertation. Ludwig-Maximilians-Universität München. doi:10.5282/edoc.26983
- Klausner T, Huntrieser H, Aufmhoff H, Baumann R, Fiehn A, Gottschaldt KD, Hedelt P, Ilić P, Jöckel P, Mrazovac-Kurilić S, Loyola D, Makroum I, Mertens M, Podražčanin Z, Roiger A (2021) First airborne in situ SO<sub>2</sub> observations of two coal-fired power plants in Serbia and Bosnia-Herzegovina: Potential for top-down emission estimate and satellite validation, EGU General Assembly 2021, online, 19–30 April 2021, EGU21-5912, doi:10.5194/egusphere-egu21-5912

- Klausner T, Mertens M, Huntrieser H, Galkowski M, Kuhlmann G, Baumann R, Fiehn A, Jöckel P, Pühl M, Roiger A (2020a) Urban greenhouse gas emissions from the Berlin area: A case study using airborne CO<sub>2</sub> and CH<sub>4</sub> in situ observations in summer 2018, *Geophysical Research Abstracts*, Vol. 22, EGU2020-3363, EGU General Assembly, Vienna, Austria, 4–8 May, 2020. doi:10.1525/elementa.411
- Klausner T, Mertens M, Huntrieser H, Galkowski M, Kuhlmann G, Baumann R, Fiehn A, Jöckel P, Pühl M, Roiger A (2020b) Urban greenhouse gas emissions from the Berlin area: A case study using airborne CO<sub>2</sub> and CH<sub>4</sub> in situ observations in summer 2018. *Elem. Sci. Anth.* 8:15. doi:10.1525/elementa.411
- Klausner T, Roiger A, Schlager H, Huntrieser H, Ziείς H, Baumann R, Mertens M, Eirenschmalz L, Stock P, Lichtenstern M, Stratmann G, Fiehn A, Jöckel P, Fischer R, Hernandez MD, Burrows J (2018) Greenhouse Gas Emissions from Major Population Centers in Europe and Asia: Aircraft-borne CH<sub>4</sub> in-situ observations during the EMERGe field mission, Conference of the International Global Atmospheric Chemistry Project (IGAC), 25–29 September 2018, Takamatsu, Kagawa, Japan. Available at: <https://elib.dlr.de/135123/>, Accessed: July 26, 2022
- Krotkov NA, McClure B, Dickerson RR, Carn SA, Li C, Bhartia PK, Yang K, Krueger AJ, Li Z, Levelt PF, Chen H, Wang P, Lu D (2018) Validation of SO<sub>2</sub> retrievals from the Ozone Monitoring Instrument over NE China. *J. Geophys. Res.* 113(D16):S40. doi:10.1029/2007JD008818
- Lammel G, Klánová J, Erić Lj, Ilić P, Kohoutek J, Kovačić I (2011) Sources of organochlorine pesticides in air in an urban Mediterranean environment: Volatilisation from soil. *J. Environ. Monit. (JEM)* 13:3358–3364. doi:10.1039/C1EM10479A
- Lin CK, Lin RT, Chen PC, Wang P, Marcellis-Warin D, Zigler C, Christiani DC (2018). A global perspective on sulfur oxide controls in coal-fired power plants and cardiovascular disease. *Sci. Rep.* 8:2611. doi:10.1038/s41598-018-20404-2
- Liu F, Choi S, Li C, Fioletov VE, McLinden CA, Joiner J, Krotkov NA, Bian H, Janssens-Maenhout G, Darmenov AS, da Silva AM (2018) A new global anthropogenic SO<sub>2</sub> emission inventory for the last decade: a mosaic of satellite-derived and bottom-up emissions. *Atmos. Chem. Phys.* 18(22):16571–16586. doi:10.5194/acp-18-16571-2018
- Loyola DG (2006) Applications of Neural Network Methods to the Processing of Earth Observation Satellite Data. *Neural Netw.* 19(2):168–177. doi:10.1016/j.neunet.2006.01.010
- Loyola DG, Gimeno García S, Lutz R, Argyrouli A, Romahn F, Spurr RJD, Pedernana M, Doicu A, Molina García V, Schüssler O (2018) The operational cloud retrieval algorithms from TROPOMI on board Sentinel-5 Precursor. *Atmos. Meas. Tech.* 11(1):409–427, doi:10.5194/amt-11-409-2018
- Loyola DG, Koukouli M, Valks P, Balis D, Hao N, Van Roozendaal M, Spurr R, Zimmer W, Kiemle S, Lerot C, Lambert JC (2011) The GOME-2 Total Column Ozone

- Product: Retrieval Algorithm and Ground-Based Validation. *J. Geophys. Res.* 116(D07):302, doi:10.1029/2010JD014675
- Loyola DG, Pedergnana M, Gimeno García S (2016) Smart sampling and incremental function learning for very large high dimensional data. *Neural Netw.* 78:75–87. doi:10.1016/j.neunet.2015.09.001
- Loyola DG, Thomas W, Spurr R, Mayer B (2010) Global patterns in daytime cloud properties derived from GOME backscatter UV-VIS measurements. *Int. J. Remote Sens.* 31(16):4295–4318. doi:10.1080/01431160903246741
- Loyola DG, Xu J, Heue KP, Zimmer W (2020) Applying FP\_ILM to the retrieval of geometry-dependent effective Lambertian equivalent reflectivity (GE\_LER) daily maps from UVN satellite measurements. *Atmos. Meas. Tech.* 13(2):985–999. doi:10.5194/amt-13-985-2020
- Lutz R, Argyrouli A, Romahn F, Loyola D (2018a) Operational Cloud Products In The UV-VIS-NIR: From Sentinel-5 Precursor Towards Sentinel-4 And Sentinel-5. *ESA ATMOS Conference 2018*, 26–29. Nov. 2018, Salzburg, Austria. doi:10.5194/egusphere-egu22-9384
- Lutz R, Argyrouli A, Romahn F, Loyola D (2018b) Operational cloud products from TROPOMI on Sentinel-5 Precursor and prospects for Sentinel-4 on MTG-S. *EUMETSAT Meteorological Satellite Conference 2018*, 17–21. Sep. 2018, Tallinn, Estonia. Available at: <https://elib.dlr.de/120897/>, Accessed: July 26, 2022
- Lutz R, Argyrouli A, Romahn F, Loyola D (2019a) The Operational Sentinel-5 Precursor Cloud Products: Status, Statistics, Applications and Comparisons. *EGU General Assembly 2019*, 7–12. April 2019, Vienna, Austria. Available at: <https://meetingorganizer.copernicus.org/EGU2019/EGU2019-2056.pdf>, Accessed: July 26, 2022
- Lutz R, Argyrouli A, Romahn F, Loyola D (2019b) Cloud Products for the Atmospheric Copernicus Missions Sentinel-5 Precursor and Sentinel-4. *2019 Joint Satellite Conference*, 28. Sep.–04. Oct. 2019, Boston, USA. Available at: <https://elib.dlr.de/130071/>, Accessed: July 26, 2022
- Lutz R, Loyola D, Efremenko D, Romahn F (2017) Operational cloud products from Sentinel-5P and Sentinel-4. *EGU 2017*, 23–28 Apr 2017, Vienna, Austria. doi:10.5194/egusphere-egu22-9384
- Matkovic V, Mulić M, Azabagić S, Jevtić M (2020) Premature Adult Mortality and Years of Life Lost Attributed to Long-Term Exposure to Ambient Particulate Matter Pollution and Potential for Mitigating Adverse Health Effects in Tuzla and Lukavac, Bosnia and Herzegovina, *Atmosphere.* 11(10):1107. doi:10.3390/atmos11101107
- Mertens M, Grewe V, Rieger VS, Jöckel P (2018) Revisiting the contribution of land transport and shipping emissions to tropospheric ozone. *Atmos. Chem. Phys.* 18(8):5567–5588. doi:10.5194/acp-18-5567-2018
- Mertens M, Jöckel P, Matthes S, Nützel M, Grewe V, Sausen R (2021) COVID-19 induced lower-tropospheric ozone changes. *Environ. Res. Lett.* 16:064005 doi:10.1088/1748-9326/abf191

- Mertens M, Kerkweg A, Grewe V, Jöckel P, Sausen R (2020a) Are contributions of emissions to ozone a matter of scale? – a study using MECO(n) (MESSy v2.50). *Geosci. Model Dev.* 13(1):363–383. doi:10.5194/gmd-13-363-2020
- Mertens M, Kerkweg A, Grewe V, Jöckel P, Sausen R (2020b) Attributing ozone and its precursors to land transport emissions in Europe and Germany. *Atmos. Chem. Phys.* 20(13):7843–7873. doi:10.5194/acp-20-7843-2020
- Mertens M, Kerkweg A, Jöckel P, Tost H, Hofmann C (2016) The 1-way on-line coupled model system MECO(n)-Part 4: Chemical evaluation (based on MESSy v2.52). *Geosci. Model Dev.* 9(10):3545–3567. doi:10.5194/gmd-9-3545-2016
- Milošević R, Mrazovac Kurilić S (2021) Human health risk assessment of industry impact in Kikinda industry zone. *Recycling Sustain. Dev.* 14(1):1–10. doi:10.5937/ror2101001M
- Mimić G, Podračanin Z, Lugonja P, Šikoparija B (2021) The influence of source maps on SILAM performance in modeling ragweed pollen concentrations in the area of a major European source. *Int. J. Biometeorol.* 65(6):917–928. doi:10.1007/s00484-021-02075-3
- Mrazovac Kurilić S, Božilović Z, Milošević R (2020) Contamination and health risk assessment of trace elements in PM<sub>10</sub> from mining and smelting operations in the Bor Basin, Serbia. *Toxicol. Ind. Health* 36(3):135–145. doi:10.1177/0748233720909719
- Mrazovac Kurilić S, Božilović Z, Salem Abulsba K, Ezarzah AM (2019) Contamination and health risk assessment of heavy metals in PM<sub>10</sub> in mining and smelting basin Bor in Serbia. *J. Environ. Sci. Health A.* 55(1):44–54. doi:10.1080/10934529.2019.1665946
- Podrascanin Z (2019) Setting-up a Real-Time Air Quality Forecasting system for Serbia: a WRF-Chem feasibility study with different horizontal resolutions and emission inventories. *Environ. Sci. Pollut. Res.* 26(17):17066–17079. doi:10.1007/s11356-019-05140-y
- Podrascanin Z, Mihailovic DT (2013) Performance of the Asymmetric Convective Model Version 2, in the Unified EMEP Model. *Q. J. Hung. Meteor. Serv.* 117(31):277–294. Available at: [www.met.hu/en/ismetar/kiadvanyok/idojaras/index.php?id=218](http://www.met.hu/en/ismetar/kiadvanyok/idojaras/index.php?id=218), Accessed: July 26, 2022
- Puljic VM, Jones D, Myllyvirta L, Gierens R (2019) Impacts of transboundary coal air pollution from Balkan region to European public health. *Eur. J. Public Health.* Volume 29, Issue Supplement\_4, November 2019, ckz185.398, doi:10.1093/eurpub/ckz185.398
- Radović B, Ilić P, Popović Z, Vuković J, Smiljanić S (2022) Air Quality in the Town of Bijeljina-Trends and Levels of SO<sub>2</sub> and NO<sub>2</sub> Concentrations. *Qual. Life.* 22(1–2):46–57. doi:10.7251/QOL2201046R
- Roiger A, Aufmhoff H, Stock P, Arnold F, Schlager H (2011b) An aircraft-borne chemical ionization - Ion trap mass spectrometer (CI-ITMS) for fast PAN and PPN measurements. *Atmos. Meas. Tech.* 4(2):173–188. doi:10.5194/amt-4-173-2011

- Roiger A, Fiehn A, Kostinek J, Eckl M, Jöckel P, Mertens M, Nickl A, Fix A, Mallaun C, Butz A, Schmidt M, Röckmann T, Gerbig C, Galkowski M, Swolkien J, Nečki J (2018a) Airborne in-situ observations during the CoMet campaign 2018: Quantification of CH<sub>4</sub> emissions from coal mining activities in Upper Silesia, Poland. AGU Fall Meeting 2018, 10–14. Dez. 2018, Washington, D.C. Available at: <https://agu.confex.com/agu/fm18/meetingapp.cgi/Paper/438543>, Accessed: July 26, 2022
- Roiger A, Huntrieser H, Schlager H (2012) Long-range transport of air pollutants. In: Atmospheric Physics: Background - Methods - Trends Research Topics in Aerospace. Springer-Verlag Berlin Heidelberg. Seiten. pp 185–201. doi:10.1007/978-3-642-30183-4\_12
- Roiger A, Klausner T, Schlager H, Ziείς H, Huntrieser H, Baumann R, Eirenschmalz L, Jöckel P, Mertens M, Fischer R, Bauguitte S, Young S, Andrés-Hernández M (2017) CH<sub>4</sub> emissions from European major population centers: Results from aircraft-borne CH<sub>4</sub> in-situ observations during EMERGe-Europe campaign 2017. AGU Fall Meeting 2017, 11–15 December 2017, New Orleans, USA. Available at: [agu.confex.com/agu/fm17/meetingapp.cgi/Paper/269902](https://agu.confex.com/agu/fm17/meetingapp.cgi/Paper/269902), Accessed: July 26, 2022
- Roiger A, Kostinek J, Klausner T, Eckl M, Fiehn A, Jöckel P, Fix A, Schlager H, Gerbig C, Necki J, Davis K, Burrows J, Andrés-Hernández M, Zavala-Araiza D (2018b) Better understanding of anthropogenic greenhouse gas emissions using aircraft-borne in-situ observations: Overview on first measurement results and future activities at DLR-IPA. DLR Conference on Climate Change 2018 (CCC-2018), 17–19 April 2018, Cologne, Germany. Available at: <https://elib.dlr.de/119851/>, Accessed: July 26, 2022
- Roiger A, Schlager H, Schäfler A, Huntrieser H, Scheibe M, Aufmhoff H, Cooper OR, Sodemann H, Stohl A, Burkhart J, Lazzara M, Schiller C, Law KS, Arnold F (2011a) In-situ observation of Asian pollution transported into the Arctic lowermost stratosphere. *Atmos. Chem. Phys.* 11(21):102975–102994. doi:10.5194/acp-11-10975-2011
- Roiger A, Thomas JL, Schlager H, Law KS, Kim J, Schäfler A, Weinzierl B, Dahlkötter F, Krisch I, Marelle L, Minikin A, Raut JC, Reiter A, Rose M, Scheibe M, Stock P, Baumann R, Bouarar I, Clerbaux C, George M, Onishi T, Flemming J (2015). Quantifying Emerging Local Anthropogenic Emissions in the Arctic Region: The ACCESS Aircraft Campaign Experiment. *Bull. Am. Meteorol. Soc.* 96(3):441–460, doi:10.1175/BAMS-D-13-00169.1
- Speidel M, Nau R, Arnold F, Schlager H, Stohl A (2007) Sulfur dioxide measurements in the lower, middle and upper troposphere: Deployment of an aircraft-based chemical ionization mass spectrometer with permanent in-flight calibration. *Atmos. Environ.* 41(11):2427–2437. doi:10.1016/j.atmosenv.2006.07.047
- Stein AF, Draxler RR, Rolph GD, Stunder BJB, Cohen MD, Ngan F (2015) NOAA's HYSPLIT atmospheric transport and dispersion modeling system. *Bull. Amer. Meteor. Soc.* 96(12):2059–2077. doi:10.1175/BAMS-D-14-00110.1

- Šikoparija B, Matavulj P, Mimić G, Smith M, Grewling Ł, Podraščanin Z (2022) Real-time automatic detection of starch particles in ambient air. *Agric. For. Meteorol.* 323(15):109034. doi:10.1016/j.agrformet.2022.109034
- Theys N, Brenot H, De Smedt I, Lerot C, Hedelt P, Loyola D, Vlietinck J, Yu H, Smets B, Kervyn FF, Barriere J, Oth A, d'Oreye N, Van Roozendael M (2021b) Global Monitoring of Volcanic SO<sub>2</sub> Degassing Using Sentinel-5 Precursor Tropomi. In: *International Geoscience and Remote Sensing Symposium (IGARSS), Seiten 1911–1914. IGARSS 2021, 11–16. July 2021, Brussels, Belgium.* doi:10.1109/IGARSS47720.2021.9554664
- Theys N, De Smedt I, van Gent J, Danckaert T, Wang T, Hendrick F, Stavrou T, Bauduin S, Clarisse L, Li C, Krotkov NA, Yu H, Van Roozendael M (2015) Sulfur dioxide vertical column DOAS retrievals from the Ozone Monitoring Instrument: Global observations and comparison to ground-based and satellite data. *J. Geophys. Res.-Atmos.* 120(6):2470–2491, doi:10.1002/2014JD022657
- Theys N, De Smedt I, Yu H, Danckaert T, van Gent J, Hörmann C, Wagner T, Hedelt P, Bauer H, Romahn F, Pedernana M, Loyola D, Van Roozendael M (2017) Sulfur dioxide retrievals from TROPOMI onboard Sentinel-5 Precursor: algorithm theoretical basis. *Atmos. Meas. Tech.* 10(1):119–153. doi:10.5194/amt-10-119-2017
- Theys N, Fioletov V, Li C, De Smedt I, Lerot C, McLinden C, Krotkov N, Griffin D, Clarisse L, Hedelt P, Loyola D, Wagner T, Kumar V, Innes A, Ribas R, Hendrick F, Vlietinck J, Brenot H, Van Roozendael M (2021a) A sulfur dioxide Covariance-Based Retrieval Algorithm (COBRA): application to TROPOMI reveals new emission sources. *Atmos. Chem. Phys.* 21(22):16727–16744, doi:10.5194/acp-21-16727-2021
- Theys N, Hedelt P, De Smedt I, Lerot C, Yu H, Vlietinck J, Pedernana M, Arellano S, Galle B, Fernandez D, Barrington C, Taine B, Loyola D, Van Roozendael M (2019) Global monitoring of volcanic SO<sub>2</sub> degassing from space with unprecedented resolution. *Sci. Rep.* 9:2643, doi:10.1038/s41598-019-39279-y
- Theys N, Hedelt P, De Smedt I, Yu H, Lerot C, Vlietinck J, Pedernana M, Arellano S, Li C, Krotkov N, Veefkind P, Loyola D, Van Roozendael M (2018) First year of Sulfur Dioxide Retrievals from Sentinel-5 Precursor TROPOMI instrument and comparison with independent satellites and ground-based datasets. *ATMOS Conference 2018, 26–29. Nov. 2018, Salzburg, Austria.* Available at: <https://ui.adsabs.harvard.edu/abs/2018AGUFM.A33J3291H/abstract>, Accessed: July 26, 2022
- Theys N, Li C, Krotkov N, De Smedt I, Lerot C, Yu H, Vlietinck J, Fioletov V, Hedelt P, Loyola D, Wagner T, Van Roozendael M (2020) TROPOMI SO<sub>2</sub> column retrievals: validation, inter-comparison with other satellite data sets and algorithm evolution. *EGU 2020, 04–08. Mai 2020, Vienna, Austria.* doi:10.5194/egusphere-egu2020-8861
- Ulniković VP, Mrazovac Kurilić SM, Staletović N (2020) Air quality benefits from implementing best available techniques in copper mining and smelting complex Bor (Serbia). *Water Air Soil Pollut.* 231:160. doi:10.1007/s11270-020-04520-2

## **Емисије сумпор-диоксида (SO<sub>2</sub>) из термоелектрана на угаљ у Србији и Босни и Херцеговини: први покушаји валидације резултата сателитског *in situ* мјерења у ваздуху помоћу TROPOMI**

Хајди Хунтризер, Тереза Клаузнер-Харлас, Хајнфрид Ауфмхоф, Роберт Бауман, Алина Фин, Клаус-Дирк Гетшалт, Паскал Хеделт, Рони Луц, Сања Мразовац Курилић, Зорица Подрашчанин, Предраг Илић, Николас Тејс, Патрик Јекел, Диего Лојола, Исмаил Макрум, Маријано Мертенс, Анке Ројгер

### **Сажетак**

Регион западног Балкана познат је по алармантним количинама сумпор-диоксида (SO<sub>2</sub>) емитованог у ваздух из термоелектрана на угаљ. Иако је посљедњих година донесен велики број прописа у области заштите животне средине који се односе на рјешавање овог проблема (нпр. о системима за одсумпоравање, о изградњи модерних електрана), вриједности концентрација SO<sub>2</sub> и даље су много веће од прописаних.

За праћење растућег загађења у региону западног Балкана, дјелимично узрокованог великом потражњом за енергијом извана (западна Европа), потребне су разноврсне анализе. Неколико од десет највећих загађивача SO<sub>2</sub> у Европи налази се у Босни и Херцеговини и Србији.

У овом поглављу представљен је рад о првим *in situ* мјерењима сумпор-диоксида у овом региону спроведеним у ваздуху помоћу њемачког истраживачког авиона. Сарађивали су научници из Босне и Херцеговине и Србије. За мјерења, у касну јесен и почетком зиме 2020. године, изабране су двије термоелектране на угаљ са највећим емисијама наведеног загађивача: „Тузла“ у Босни и Херцеговини и „Никола Тесла“ у Србији. Мјерења су углавном вршена у граничном слоју (испод ~1 km надморске висине). Мјерењем низ вјетар од електрана установљене су изузетно високе вриједности SO<sub>2</sub>, које прелазе 100 јединица на милијарду (ppb = pmol mol<sup>-1</sup>). Мјерење је вршено на удаљености ~20-40 km од извора. Облаци дима са садржајем SO<sub>2</sub> из електрана задржавали су се у добро дефинисаним инверзионим слојевима између ~500-1000 m надморске висине. Резултати оваквих проучавања могу се користити за валидацију синхроних мјерења SO<sub>2</sub> у свемиру помоћу TROPospheric Monitoring Instrument (TROPOMI) onboard the Sentinel-5P satellite.



Након разилажења облака који су често у одређеном периоду покривали дијелове посматраних територија у хладнијим мјесецима, могла су се извршити мјерења изнад Термоелектране „Никола Тесла“ помоћу TROPOMI – SO<sub>2</sub>. Урађена је и валидација, јер је мјерење извршено кад није било облачно вријеме, док су била добро дефинисана вертикална проширења сондираног облака дима са SO<sub>2</sub> (потребно за процјену густине вертикалне колоне (VCD), мјерено сателитом). Иначе, ова мјерења у ваздуху, праћена симулацијама модела, могу се користити за одређивање јачине емисије SO<sub>2</sub> из термоелектрана и затим за упоређивање са извјештајима издатим од оператера електране. Овим радом указано је на умјерену усклађеност између мјерења у ваздуху, резултата модела, инвентара емисија и сателитских мјерења за Термоелектрану „Никола Тесла“.

Кључне ријечи: Емисије сумпор-диоксида, термоелектране на угаљ,  
мјерења у ваздуху, сателитска валидација, Балкан